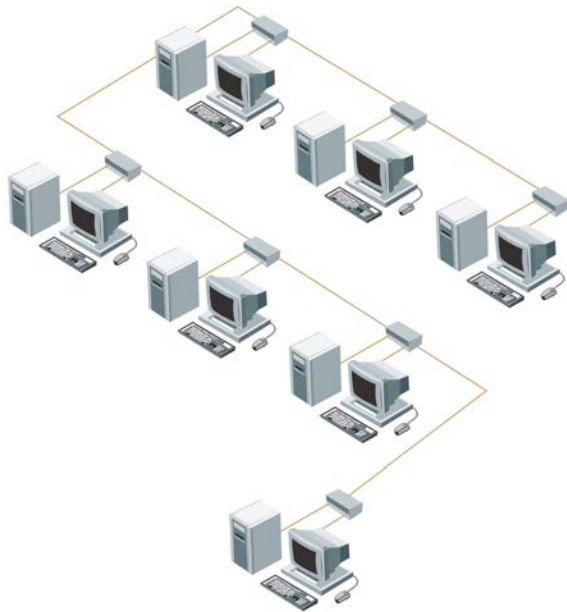


Quick Start Guide

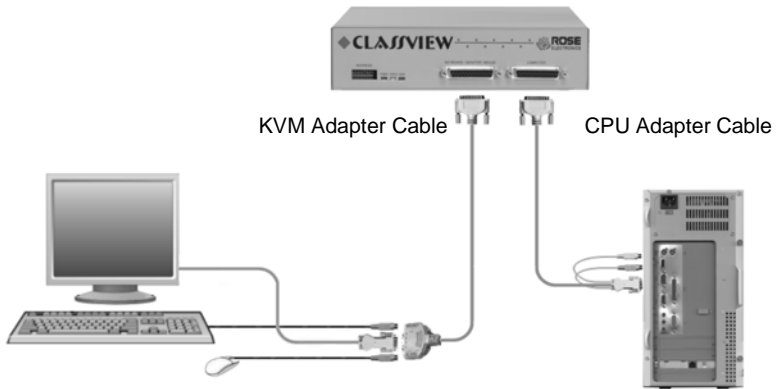


ROSE.COM

The basic installation of ClassView consists:

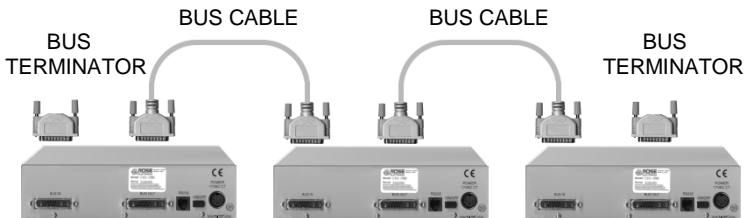
Step 1. Connecting the keyboard, monitor, and mouse

- 1.1 Plug the DB-25M connector of the appropriate adapter cable into the connector labeled "Keyboard/Monitor/Mouse" on the ClassView front panel.
- 1.2 Plug the adapter cable's keyboard, monitor, and mouse connectors into your equipment's corresponding connectors.
- 1.3 Plug the DB-25 male connector of the CPU adapter cable into the connector labeled "Computer" on the ClassView front panel.
- 1.4 Plug the CPU adapter cable's monitor, keyboard, and mouse connectors into the CPU's corresponding ports.



Step 2. Connecting the bus

- 2.1 Connect the units together with the coax bus cables by connecting either bus in or out to either bus in or bus out of the next unit.
- 2.2 Install terminators on the first unit on the bus and the last unit on the bus.
- 2.3 Set the dip switch address to identify the CPU numbers. The teacher's station must be set to address 255. The students are usually set to start with address 1, the next would be 2 and so on.



Step 3. Applying power

- 3.1 Connect the power transformers
- 3.2 Push the On/Off switch on the back of the ClassView to power it up.
- 3.3 Upon power-up the yellow status light will light briefly and go out.
- 3.4 Boot up the CPUs. ClassView emulates all keyboard and mouse functions for automatic boot-up.

Step 4. Testing the installation

- 4.1 Put the keyboard template on the upper function keys of your keyboard. Commands are carried out by pressing and releasing the left control key, hitting the function key corresponding to the command desired, and hitting another function key corresponding to the station(s) to which the function will apply.

4.2 example:

To view the screen of student #2;

Press and release the left control key, hit view (F1) and hit 2 (F2).

To share the CPU of student #1;

Press and release the left control key, hit share (F2) and 1 (F1).

To disable all student's screens;

Press and release the left control key, hit disable (F6) and All (F12).

To show the instructor's screen to student #3;

Press and release the left control key, hit show (F4) and hit 3 (F3)

Keyboard commands

Command	Key Sequence	Description
View	[Ctrl] F1 station #*	View student's station
Share	[Ctrl] F2 station #*	Share student's station
Control	[Ctrl] F3 station #*	Control student's station
Show	[Ctrl] F4 station #*	Show instructors screen to students
Enable	[Ctrl] F5 station #*	Enable keyboard, mouse, and monitor at student's station
Disable	[Ctrl] F6 station #*	Disable keyboard, monitor, and mouse to the selected CPU port
Freeze	[Ctrl] F7 station #*	Disables keyboard and mouse at student's station
Reset command	[Ctrl] R	Resets and enables mouse and keyboard, enables PS/2 mouse on currently selected port

These are the most common keyboard commands. Please see the installation and operations manual for a complete list of the commands and a detailed explanation of each command.



Server Management



Solutions

10707 Stancliff Road
Houston, Texas 77099

Phone: (281) 933-7673
WWW.ROSE.COM