

UltraMatrix Remote 2



Features and Benefits

- Secure connection to remote computers locally or over IP using any supported web browser and RealVNC viewer
- RealVNC viewer can be downloaded directly from the unit or RealVNC web site.
- Security system with login, computer access control and data encryption using AES 128 bit encryption.
- Video resolution up to 1280 x 1024
- Powerful and expandable to 1,000 computers.
- Local or remote BIOS-level access control
- Up to 4 local user and 4 remote user ports
- Up to 4 remote users can connect to the same remote user port simultaneously. Users connected to the same remote user port share all functions.
- Serial VT220 terminal emulation for access to UNIX hosts, routers, and other supported serial devices (Multi-Platform models)
- Multi-lingual menu (English, French, German, Spanish, Italian, and Portuguese)
- Status screen shows current connections, computer power, plus additional information
- Supports PS/2, PS/2 wheel, USB, and Sun
- Supports HV sync, composite sync, and sync-on-green video
- Serial access for computer switching, unit configuration, flash memory upgrades and reset to factory defaults
- Free firmware upgrades for product enhancements and new software features are available at www.rose.com
- Rack mount kits available in 19", 23", and 24" sizes
- Made in USA

Matrix KVM switch with integrated remote access over IP

System-wide connectivity locally or over IP from any location worldwide using any supported web browser

Connects 1,000 computers to Multiple user stations

High quality video up to 1280 x 1024

Secure encrypted operation with login and computer access control

PC only and Multi-Platform models available. Multi-Platform design makes it compatible with PCs, Sun, UNIX, Linux, USB, and serial devices

Download and install the RealVNC Viewer directly from the unit

The UltraMatrix™ Remote 2 Advantage

The UltraMatrix Remote 2 represents the next generation in KVM switches. It not only provides a comprehensive solution for remote server console access with Bios-level access control, it provides a very secure remote access to your system, locally, from any workstation on your network, or worldwide over IP using any supported web browser and the secure RealVNC Viewer.

The powerful, advanced on-screen menu can be used to configure the unit, name the computers, and much more.

When accessing a computer over your network, the Viewer application receives and displays the video and sends back keyboard and mouse data. This process allows you to access the remote computers from anywhere, locally, across your network, or around the world.

The UltraMatrix Remote 2 can easily be expanded to other KVM switches to make a seamless and truly scalable KVM matrix solution. Network communication technology is used to reduce cost, eliminate single points of failure, and increase reliability.

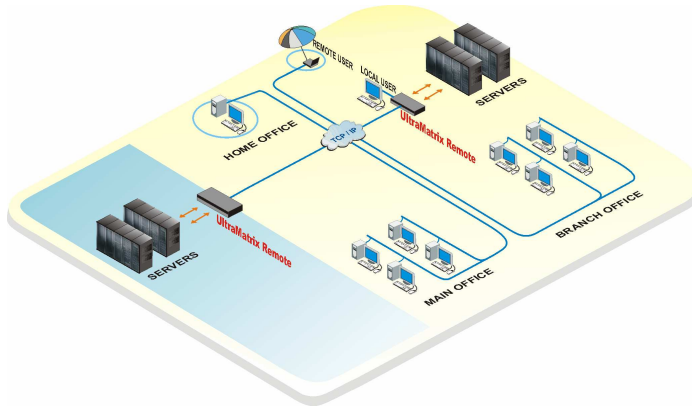
The RealVNC Viewer simplifies access to the remote computers and provides an additional layer of security to the system. Once connected you will see a crisp, clear, high-quality image of the remote computer. Your remote keyboard and mouse now control the remote computer.

The UltraMatrix Remote 2 uses flash memory technology. Upgrades and product enhancements are easily done by obtaining unit specific firmware from our web site at www.rose.com.



With UltraMatrix Remote 2 you have access to your systems from anywhere in the world

Typical Application



Access computers or servers locally, over your network, or over IP from any location worldwide

Introduction The UltraMatrix Remote 2 is a versatile and powerful product that extends the range of access to your computers from anywhere in the world. Its user friendly interface and powerful on-screen display makes managing your computers, even at the BIOS level, easier and more efficient. With the UltraMatrix Remote 2's expansion capability, the number of computers that can be remotely accessed is up to 1,000.

Models The UltraMatrix Remote 2 is available in several different models. All models are fully expandable in multiple configurations giving users access to as many as 1,000 computers.

Security System security can be configured to give access to multiple users, each with a unique user ID and password. Each user can be granted access to certain computers and restricted from others. There are four view modes that can be assigned to each user; view, share, control, and private. This gives the flexibility of allowing certain users full access or just view capabilities. All transmissions to and from the remote computer are 128 bit encrypted for added security.

On-screen display The UltraMatrix Remote 2 excels with its on-screen display (OSD) technology. The intuitive interface uses drop-down lists of computers to connect to and pop-up menus to configure the unit. User-friendly help lines explain each selected item. CPU names, security, appearance, screen saver and many other features are easily configured. You can use the OSD to connect to computers by name, view the system connections, and observe system status in real time. The interface can be programmed for English, French, German, Spanish, Italian, or Portuguese.

Installation The UltraMatrix Remote 2 is easy to install and configure. Just connect the unit to the computers to access, connect the local access KVM stations and connect the unit to your network. Next configure the IP addresses for unit access over IP and its ready to use locally or from around the world.

Operation The RealVNC viewer program is used to remotely access the computers or servers connected to the UltraMatrix Remote 2. You can connect to a computer using simple keyboard commands or an on-screen list of computers. Once a computer is selected and connected, the remote workstation can fully control, update, maintain and configure the computer or server.

Flash memory To support the latest devices and provide product enhancements and features, the UltraMatrix Remote 2 contains flash memory. Free, lifetime firmware updates are available from our web site at www.rose.com.

Serial devices Any CPU port on the Multiplatform model can be configured to be serial. Once configured, the OSD is so powerful that when you switch to that CPU port it converts to a color VT220 terminal emulator for that port. When you connect to a serial device, you get a 24x80 screen with two status lines. You can access the serial device just as if you were connected with a terminal.

Keyboard and mouse The UltraMatrix Remote 2 fully emulates the keyboard and mouse. You can use any combination of PS/2, USB, Sun, PS/2 wheel, and serial mice. USB (PC, Apple, and Sun) and serial mouse are for the computer side only, not the KVM side. It is compatible with all major operating systems such as Windows, Solaris, Linux, UNIX, SGI, and OSX.

Part Numbers

PC models	Remote Users*	Local Users	# of CPUs	Multi-Platform	Remote Users*	Local Users	# of CPUs
RP2-1R2X8U/2	1	2	8	RE2-1R2X8U/2	1	2	8
RP2-1R2X16U/2	1	2	16	RE2-1R2X16U/2	1	2	16
RP2-2R2X8U/2	2	2	8	RE2-2R2X8U/2	2	2	8
RP2-2R2X16U/2	2	2	16	RE2-2R2X16U/2	2	2	16
RP4-1R4X16U/2	1	4	16	RE4-1R4X16U/2	1	4	16
RP4-2R4X16U/2	2	4	16	RE4-2R4X16U/2	2	4	16
RP4-4R4X16U/2	4	4	16	RE4-4R4X16U/2	4	4	16
RM-UBnn	Rackmount kit (1U chassis) nn= 19", 23", or 24"						
RM-UCnn	Rackmount kit (2U chassis) nn= 19", 23", or 24"						

* One user, local or remote, per slot (same KVM port.)

/E P/N suffix = expansion card option - /E2 = 2 expansion cards

/ERJ P/N suffix = RJ expansion card option

/E2RJ = 2 RJ expansion cards

Specifications

Dimensions / Weight

#CPU ports	Width	Depth	Height	Weight
8	16.7" / 42.4cm	15.2" / 38.6cm	1.75" / 4.5cm	9.3lbs / 4.2kg
16	16.7" / 42.4cm	15.2" / 38.6cm	3.50" / 9.0cm	14.0lbs / 6.4kg

Power 90-240VAC - Auto switching, 130 Watts

Connectors Power - IEC320 standard receptacle

CPU/KVM - DB25F

Expansion - DB15M/F

RS232 - RJ12 (6-pin)

Network - RJ45

Indicators Chassis Power, CPU select, CPU power Link, Local access, remote access, VNC, and speed (10 / 100)

Video bandwidth 150MHz

Resolution 1280 x 1024

Chassis Electro galvanized steel, black powder coated

Controls Power on/off switch

Indicators LEDs: Power, Select, CPU power

Environment 0 - 45 °C, 5% - 80% non-condensing RH

Approvals FCC, CE

■ Phone: 281-933-7673 ■ E-mail: sales@rose.com ■

10707 Stancliff Rd. Houston, TX 77099

Rose Electronics - Europe: +49 (0)2454 969442 Rose Electronics - Asia: +65 6324 2322

DS-UMR2 Rev 2.2

© Copyright 2008 Rose Electronics. All rights reserved



WWW.ROSE.COM